

## Full range of product offering for dental technicians at Dentsply Sirona

**As the world's largest manufacturer of dental products, Dentsply Sirona has a variety of intelligent solutions that have been developed to meet the requirements of dental laboratories. Thanks to the combined power of the business units Dentsply Sirona CAD/CAM, Dentsply Sirona Prosthetics and Dentsply Sirona Implants, these solutions include both materials and devices for conventional manufacturing procedures and materials as well as hardware and software solutions for digital work processes. This results in a decisive advantage for dental technicians: At Dentsply Sirona, dental technicians can find the entire world of dental technology under one roof, and can take advantage of products and workflows that have been coordinated with each other.**

**Bensheim/Salzburg, March 21, 2017.** As one of the central subjects in the area of modern dental technology, CAD/CAM-supported production of dental restorations for the laboratory is playing an ever more important role. With its three business units – CAD/CAM, Prosthetics and Implants – focusing on dental technology, Dentsply Sirona possesses concentrated competence in dental technology and offers solutions for all steps within this production process. This brings clear added value to the dental laboratory as it combines specialists for the digital workflow and the inhouse production of restorations: one for dental materials and one for the centralized fabrication of abutments and implant-supported structures. In this way the whole process from impression taking to the final restoration can be handled with products from Dentsply Sirona – while still allowing for the freedom to include components from other open CAD/CAM-systems. In all branches of dental technology, Dentsply Sirona's innovation leadership is a benefit to the lab – numerous examples for this can be found at the IDS 2017.

### **Software updates for new possibilities**

The current software updates inLab CAD SW 16.0 and inLab CAM SW 16.0 are perfect examples of such possibilities. They expand the range of indications and provide new functions for an even more efficient computer-aided production process that is oriented towards dental requirements. Now, for the first time, occlusal splints and individual impression trays can be designed with the inLab software via the new plugin inLab Splint in the "Removable Dentures" module. The new inLab Check plugin is being used in dentistry for the first time. The program supports the user via the FEM analysis of the restorations designed for critical stress-sensitive areas, and visualizes them. With screw-retained bridges and bars at the implant level, there is an additional indication that makes the immediate synergy effect with the central production service Atlantis from Dentsply Sirona useful for the laboratory for the first time.

## Press contact

Marion Par-Weixlberger  
Director of Corporate  
Communications and Public Relations  
Sirona Straße 1  
5071 Wals/Salzburg, Austria  
T +43 (0) 662 2450-588  
F +43 (0) 662 2450-540  
[marion.par-weixlberger@dentsplysirona.com](mailto:marion.par-weixlberger@dentsplysirona.com)

Dr. Kaschny PR GmbH  
Kapersburgweg 5  
61350 Bad Homburg, Germany  
T +49 (0) 6172 6848 1-0  
F +49 (0) 6172 6848 1-60  
[redaktion@kaschnypr.de](mailto:redaktion@kaschnypr.de)

### **About Dentsply Sirona:**

Dentsply Sirona is the world's largest manufacturer of professional dental products and technologies, with a 130-year history of innovation and service to the dental industry and patients worldwide. Dentsply Sirona develops, manufactures and markets comprehensive solutions, products for dental and oral health, and medical supplies that are part of a strong brand portfolio. As The Dental Solutions Company, Dentsply Sirona supplies innovative, effective, high-quality solutions to improve patient care and ensure better, faster, and safer dentistry. Dentsply Sirona's global headquarters is located in York, Pennsylvania, and the international headquarters is based in Salzburg, Austria. The company's shares are listed on the NASDAQ under the symbol XRAY. Visit [www.dentsplysirona.com](http://www.dentsplysirona.com) for more information about Dentsply Sirona and its products.

With the accurate inEos X5 scanner and the Atlantis FLO-S scan body, inLab SW users can scan cases from all major implant systems for ordering of Atlantis suprastructures. This initial order option available with the inLab CAD SW 16.0 creates more versatility for the dental laboratory. Additional new production possibilities arise from the manufacturing of one-piece individual titanium abutments with the inLab MC X5 5-axis milling unit. The STL/XML import function for implant restorations with screw channels from other CAD software has been expanded to include the current inLab CAM SW 16.0.

### **New opportunities with Atlantis solutions**

The Atlantis solutions line offers a range of digital services that are continuously developed. The possibility to order Atlantis abutments and Atlantis suprastructures via the Dentsply Sirona lab-design software creates new opportunities for the dental laboratory to offer more implant-based restorations to the dentist. The latest innovation from Atlantis is the Atlantis CustomBase solution for single tooth screw-retained restorations. It combines an Atlantis Abutment and an Atlantis Crown with a screw access hole. The crown is cemented to the abutment extraorally and screw-retained into the implant, avoiding potential complications caused by excess cement. The Atlantis Crown can be ordered as a physical crown or as a digital unique file.

The digital file is either a “ready-to-mill crown” that can be imported directly into the inLab CAM SW or an Atlantis Core File. This file includes the abutment designed by Atlantis, which can be used by the lab team as the basis for their own crown design. The Atlantis CustomBase solution is available in gold-shaded titanium and titanium, and is available for all major implant systems.<sup>1</sup>

In addition, the Atlantis patient-specific suprastructure has state-of-the-art design software and additive manufacturing of titanium and cobalt-chrome implant-retained fixed restorations.

### **High performance materials for the modern lab**

Materials are also a part of the range of products from Dentsply Sirona, along with the new denture base material Lucitone HIPA (high impact pour acrylic) that is being presented at the IDS. This new denture base material offers extraordinarily high strength, color stability and fitting accuracy. At the same time, the material specialist also has a new development in the area of zirconia ready for the ceramic sector: Cercon xt with a level of translucency that is around 19% higher than that of Cercon ht. Cercon xt provides the dental laboratory with an even better level of esthetics, particularly for monolithic restorations. True Color Technology ensures a pronounced level of color reliability and reproducibility. As was the case with the Cercon ht, the Cercon xt blanks are available in pre-colored variants in the classic 16 VITA<sup>2</sup> colors and in white. Thanks to the standard format (98 mm disks), the new material can be used in all common open CAD/CAM systems, and is also available as

---

a 105 mm disk for processing in the brain expert and brain xpert milling units.

Here, the benefits of the combined level of dental expertise that Dentsply Sirona possesses come into effect. Along with high-performance materials such as Cercon, with the 5-axis milling unit inLab MC X5, the company can also provide a machine that can be used to process standard disks. This production unit is also compatible with an additional new material option for the digital workflow: the sintering metal disk inCoris CCB now enables dental technicians the option to mill using non-precious metals in their laboratory's own inLab MC X5. Here, the expansion of the range of indications to include long-span work across four units in particular has shown itself to provide added value. As a result, an even larger number of cases can be handled using this processing method that is quicker, cleaner and more cost-effective in comparison to the casting method.

#### **Conventional procedures, new chances**

But the path of progress does not necessarily always move from analog towards digital. Using the example of an additional ceramic innovation from Dentsply Sirona, i.e. Celtra Press, it is clear that benefits for the dental laboratory can equally result from a contrary development. This is actually a material version of the zirconia-reinforced lithium silicate (ZLS) Celtra Duo that had been developed for CAD/CAM processing. As the name suggests, Celtra Press is now suitable for the traditional press method. Hence the benefits of the special micro-structure of ZLS can now also be used in this processing method that is used in nearly every laboratory. This includes a particularly high strength of over 500 MPa as well as outstanding mechanical and light-optical properties that in particular achieve a profoundly near-natural chameleon effect. The system components that have been specially matched with the new material ensure rapid processing and outstanding results when using Celtra Press: The Celtra Press Investment material is partially responsible for the fact that only a minimal reaction layer is formed during pressing, and this layer is removed by sandblasting during divesting. The Celtra Ceram veneering ceramic is available to the laboratory for esthetic individualization.

In addition to this variety of interesting new products, Dentsply Sirona's range of products of course also includes just as many long-established materials and hardware and software solutions. They allow the laboratory to benefit from workflows and products that have been coordinated with each other with a particularly wide range of indications.

*Due to various certification and registration periods, not all products are immediately available in all countries.*

**Dentsply Sirona at the IDS 2017:**

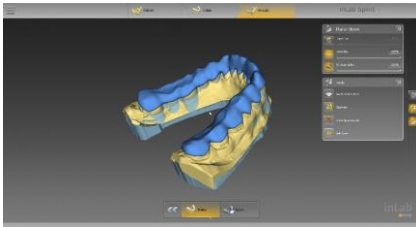
Hall 10.2 & 11.2

<sup>1</sup> For details see the Atlantis implant compatibility charts

<sup>2</sup>VITA is a registered trademark of Vita Zahnfabrik H. Rauter GmbH & Co. KG, Bad Säckingen.



## IMAGES



*Fig. 1: New indication with inLab CAD SW 16.0 Splints and individual impression trays.*



*Fig. 2: The inCoris CCB sintering metal disks from Dentsply Sirona are available as standard disks (diameter 98.5 mm) in six different heights.*



*Fig. 3: The new zirconium oxide-reinforced lithium silicate Celtra Press as well as the veneering porcelain Celtra Ceram and the investment material Celtra Press Investment are now available.*



*Fig. 4: The new Atlantis CustomBase solution, combining an Atlantis Abutment and a crown, for screw-retained single tooth restorations.*